



WE SPEAK WE STAND
WESLEYAN'S COMMUNITY OF CARE



Sexual Violence Prevention, Response and Healing at Wesleyan

TABLE OF CONTENTS

- I. Wesleyan Sexual Misconduct Policy..... 4
- II. It’s Still Sexual Assault If..... 5
 - A. Supporting a Friend..... 6
- III. Intimate Partner Violence..... 8
 - A. Red Flag Behaviors..... 9
 - B. Supporting a Friend..... 10
- IV. Stalking..... 14
 - A. Documenting Stalking Incidents..... 15
- V. Consent..... 16
 - A. Enthusiastic Consent..... 17
 - B. C.E.R.T.S. Healthy Sexuality Model..... 18
 - C. Body Language..... 19
 - D. Consent Phrases..... 20
- VI. We Speak We Stand: Bystander Intervention..... 21
 - A. How Can I Intervene..... 22
 - B. Intervention Strategies..... 23
- VII. Sexual Violence is a Community Issue..... 24
- VIII. Healing and Support at Counseling & Psychological Services 25
 - A. Frequently Asked Questions..... 27
- IX. Reporting Options..... 29
- X. Resources..... 35

WESLEYAN POLICY STATEMENT: SEXUAL ASSAULT AND MISCONDUCT

Wesleyan University will not tolerate discriminatory harassment and/or sexual misconduct (whether it comes in the form of intimate partner violence, non-consensual sexual activity and sexual assault, sexual exploitation, stalking or sexual harassment) against students, faculty, staff, trustees, volunteers, and employees of any university contractors/agents.

The sexual misconduct policy can be found online at www.wesleyan.edu/sexualassault

Sexual violence has no place in our community. College campuses are a microcosm of society and just as sexual violence happens in the larger society, it also occurs on college campuses. Wesleyan University is committed to sexual violence prevention and using a trauma-informed model response protocol when working with survivors of sexual violence. This booklet contains information about sexual assault, intimate partner violence, stalking, consent, bystander intervention, reporting protocols and resources. It can be found online at www.wesleyan.edu/sexualassault.

IT'S STILL SEXUAL ASSAULT IF...

The survivor was intoxicated. Many students, especially those under 21, are concerned about reporting a sexual assault to Public Safety or the police, because they are afraid they will receive an alcohol citation. In cases of sexual assault, students will not receive a citation for drinking or using drugs. The primary concern of Public Safety, the Office of Student Affairs and the Wesleyan University community is supporting students. **Wesleyan recognizes that drinking and/or using drugs does not make survivors responsible for an assault.** Alcohol does not cause sexual assault. The responsibility for sexual assault lies solely on the shoulders of the offender.

The survivor consented to other forms of sexual activity. Giving consent to one activity is **NOT** automatic consent for other activities to occur.

The people know each other. It's a myth that most perpetrators are strangers. While assaults by strangers do happen, in 2/3 of sexual assaults, the survivor knows the person who hurt them (U.S. Department of Justice, *2005 National Crime Victimization Study*, 2005). This is especially true on college campuses.

Force was not used. In the majority of sexual assaults, physical force is not used. Instead, implied threats or social status may be used to coerce the person.

The survivor did not fight back or report immediately. Many survivors are overcome by shock or denial and do not actively "fight" back. Many survivors are also afraid that if they fight back that the assailant will become more violent. There are no "right" responses. Delayed reporting to friends, family and law enforcement are common. There are a number of reasons why someone might delay reporting including shame, fear of not being believed or shock and disbelief.

HOW TO BE A SUPPORTIVE FRIEND TO A SURVIVOR

Listen. Listen actively and non-judgmentally. It is not about saying the “right” things, but instead creating a supportive space for a person to disclose a difficult experience. Focus on listening and allow the person to disclose as much, or as little, as they want. Allow your friend to go at their own pace and be careful not to press for details.

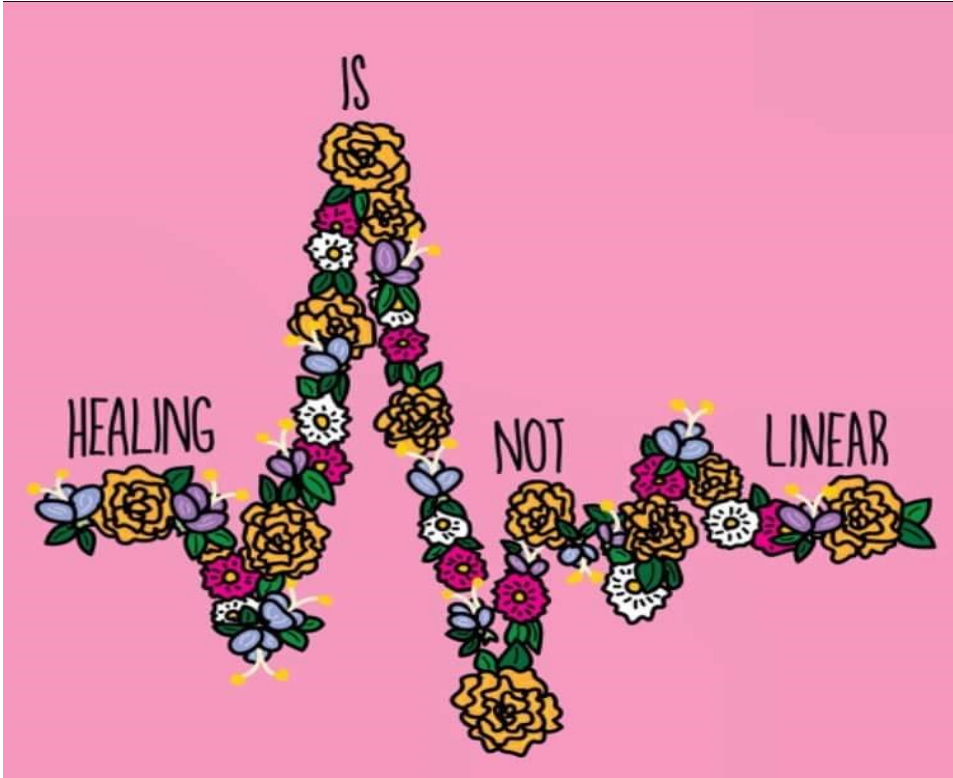
Believing someone is one of the most important things you can do. The first disclosure often sets the tone for how people engage with their healing process. People who disclose to someone and are believed are more likely to seek help. People who are not believed tend to shut down. A negative response can also reinforce any feelings of guilt and self-blame that the person may feel.

Restore choice, provide options. Healing occurs by making choices about what to do next. Respect and support your friend’s decisions. If you feel very strongly that your friend should report their experience to the police or Public Safety, but they decline to do so—respect that.

Stay committed and flexible. Healing is not a linear process. There are some days that will be better than others. Be careful not to assign an arbitrary timeline to your friend’s healing. Ask your friend what support means to them, since we all have different definitions and expectations about support.

Know your limitations. Sexual assault may bring up strong emotions and reactions for you. Talking with someone on the Sexual Assault Response Team, in Counseling and Psychological Services or the Office of Religious and Spiritual Life or a counselor at the Women and Families Center may be helpful to you. Set boundaries. Ask for help.

Understand social issues. Gender identity, race, ethnicity, sexual orientation, class and religion and other identities often factor into how a survivor navigates their experience. Be mindful of how this may impact someone’s experience and interaction with different systems.



INTIMATE PARTNER VIOLENCE

Intimate partner violence occurs when one person attempts to physically and psychologically dominate their partner by using threats, gestures, emotional and/or physical abuse. Violence in relationships usually escalates from threats and emotional abuse to physical violence. Intimate partner violence affects people of all gender identities and sexualities along the spectrum.

Relationship Red Flag Behaviors:

- ◆ Enduring humiliating language or being made to feel bad about yourself.
- ◆ Being asked to give up needs and wishes to satisfy an abusive partner.
- ◆ Intimidation includes behaviors like breaking things, cornering someone or standing over them in a threatening manner.
- ◆ Receiving excessive texts, emails or phone calls from a partner. Monitoring or checking social media accounts, email or phone without permission.
- ◆ Spending less time with friends than usual because it is upsetting to a partner.
- ◆ Partner is jealous and/or possessive.

In a relationship where one partner identifies as trans, these abusive behaviors may be present:

- ◆ Using pronouns that disregard the partner's preference.
- ◆ Ridiculing how their partner's body looks.
- ◆ Ridiculing or belittling their partner's identity.
- ◆ Hiding or throwing away hormones, binders, clothes, etc.
- ◆ Telling their partner that they would harm the LGBTQ community if they exposed what was happening in the relationship.

RED FLAG BEHAVIORS

Increases Dependence

Isolation

Violation of Personal Space

Reduces Self-Esteem

Emotional Abuse

Limiting Self-Expression

Testing

Instills Fear

Threats and Rumors

Intimidation and Physical Violence

Stalking

Source: Rebecca Harrington @ SUNY Oneonta.

INTIMATE PARTNER VIOLENCE: SUPPORTING A FRIEND

Believe. Listening without judgment is one of the greatest gifts you can provide to someone in an abusive or unhealthy relationship. It can be very difficult for someone who is in an unhealthy relationship to open up. They may feel embarrassed, uncomfortable or afraid that they will be judged. It may take a few times before your friend feels comfortable sharing details about their relationship. Be patient. The important thing is to break through the isolation that most people in these situations feel.

Take the abuse seriously. Physical and emotional abuse have no place in a healthy relationship. **Any type of emotional or physical abuse is a “big deal” because abuse tends to escalate over time.**

Focus on safety. Help your friend plan for ways to stay safe by identifying resources on campus and in the community. Remember, resources are available to both you and your friend. Schedule an appointment with Counseling and Psychological Services (CAPS) to talk through how to respond or call Public Safety to help deescalate situations.

Help your friend recognize the warning signs of unhealthy relationships. It is very common for people who are experiencing emotional or physical abuse to minimize what is happening or not classify it as abuse. They may have a difficult time noticing the pattern of behaviors that constitute abuse. Referencing any red flags that you notice can help provide context and perspective.

INTIMATE PARTNER VIOLENCE: SUPPORTING A FRIEND

Encourage your friend to talk to a therapist to clarify their feelings and think about what they would like to do. Also, counseling services are available to support you while helping them deal with the situation. Call Counseling and Psychological Services at 860.685.2910 to schedule an appointment.

Don't give up. Break-ups and reconciliations are common in the context of relationship violence. This cycle can be one of the most frustrating things to watch for friends of people who are in unhealthy relationships. It typically takes 7-9 attempts to leave a relationship before the person leaves for good. Be patient.

Reassure your friend that the abuse is not their fault. Remind your friend of their strengths, challenge them when they put themselves down and praise them for every step they take and let them know they have your support.

Take care of yourself. Providing support to someone who is involved in an unhealthy or abusive relationship is challenging. **It is okay, and important, for you to set boundaries when you feel overwhelmed.** It is not your job to save your friend. Ultimately, they will need to decide what to do. They can connect with Counseling and Psychological Services, the Office of Religious and Spiritual Life, ResLife staff, their class dean or the Women and Families Center.

Be understanding and compassionate if your friend is confused or unsure about what to do or if they still have feelings for their partner. Breaking up is difficult in the best of circumstances and can become more complicated when abusive elements are involved.

INTIMATE PARTNER VIOLENCE: SUPPORTING A FRIEND

COMMUNICATION ROADBLOCKS

Don't blame your friend for the abuse. They are likely already blaming themselves. In addition, their partner is probably blaming them, too. Remember, there is nothing that your friend could do that would justify being abused by another person.

Don't focus on trying to understand the partner's reasons for being abusive. Concentrate on supporting your friend. If you're concerned about a friend is acting towards their partner, encourage them to get help.

HELPFUL QUESTIONS TO ASK:

What can I do to help?

How have you been dealing with things?

Would you like me to go
with you to CAPS
to set up an appointment?

Do you know about
resources in the
community?

STALKING

“A course of conduct directed at a specific person that would cause a reasonable person to: fear for their safety or the safety of others; or suffer substantial emotional distress. This includes cyber-stalking, a particular form of stalking in which electronic media is used to pursue, harass, or make unwelcome contact with another person. Stalking and cyber-stalking may involve individuals who are known to one another or have an intimate or sexual relationship, or may involve individuals not known to one another.”

Source: www.wesleyan.edu/sexualassault

STALKING

Stalking happens to people of all gender expressions and may involve family members, friends, current or ex-partners or co-workers. Most stalking takes place between people who know each other. Stalking can happen anywhere, but the closed setting of a college campus can make it easier for stalkers to trace the movements of their victims.

EXAMPLES OF STALKING BEHAVIORS:

- Leaving harassing or unwanted notes under someone's door
- Constantly texting or calling someone who does not wish to communicate with you
- Posting information, whether it be true or false, on a website for the purpose of embarrassing, scaring or harming someone
- Tracking someone's schedule or activities on a social networking site for the purpose of following them or intimidating them
- Hacking and/or monitoring a person's computer, emails or social networking profiles
- Posting pictures of someone online to try to embarrass or scare them

*If you are engaged in any of these behaviors or are being harassed,
please contact Counseling and Psychological Services,
to get help and support at 860.685.3217.
Stalking incidents can be reported to Public Safety at 860.685.2345
or the Middletown Police at 860.638.4141*

DOCUMENTING STALKING INCIDENTS

Stalking is a serious crime and can significantly disrupt a student's college experience. The stress caused by being stalked can lead to difficulty sleeping, anxiety, depression, anger, fearfulness and constantly feeling "on edge."

It is important to document all incidents of stalking that occur even if you are not sure what you will do with the information. Be sure to write down each time the stalker contacts you. The log should include the time, date, location and the words and actions of the stalker. **Save any and all texts, emails, unwanted gifts and other contacts.**

If you are being stalked, it can be very helpful to talk to someone to help you deal with your feelings. Contact Counseling and Psychological Services at 860.685.2910 to set up an appointment and learn more about resources.

**Contact Public Safety at 860.685.2345 to report stalking incidents
or Middletown Police at 860.638.4141.**

WHAT IS CONSENT?

Consent is a voluntary, **sober**, imaginative, **enthusiastic**, creative, wanted, informed, **mutual**, honest and verbal agreement.

Consent is an **active agreement**; consent cannot be coerced.

Consent is a **process**, which must be asked for every step of the way.

Consent is **never implied** and cannot be assumed, even in the context of a **relationship**.

A person who is incapacitated cannot provide consent. If someone is too incapacitated to make decisions and **communicate** with their partner, they cannot provide consent.

The absence of “no” doesn’t mean “yes.”

Both people should be **involved** in the **decision** to have sex.

GOOD SEX INVOLVES CONSENT!

A NOTE ABOUT CONSENT IN LONG-TERM RELATIONSHIPS: Recognizing that **each sexual interaction requires consent**, discuss how you will communicate consent in your relationship. **Don’t make assumptions.**

ENTHUSIASTIC CONSENT

“There is a reason for the “enthusiastic” part of the phrase. Consent without enthusiasm is rather lukewarm: “OK, FINE, go ahead.” “I don’t care.” “I have no opinion.” “Whatever, if it gets you to get off my back.”

We need to stop assuming that we can communicate desires through some convoluted dance of subtle cues and half-no’s. Consent should be uncomplicated: only “Yes!” and other such affirmative variants can mean ‘yes’.

~Jeff Vandermeer

Source: www.jeffvandermeer.com/2010/07/31/on-enthusiastic-consent/

C ONSENT

+ CAN I FREELY AND COMFORTABLY CHOOSE WHETHER OR NOT TO ENGAGE IN SEXUAL ACTIVITY?

+ AM I MINDFUL THAT MY PARTNER(S) AND I HAVE THE RIGHT TO STOP AT ANY TIME?

E QUALITY

+ DO MY PARTNER(S) AND I FEEL THAT WE SHARE EQUAL LEVELS OF PERSONAL POWER ?

R ESPECT

+ DO I RESPECT MY PARTNER(S)?

+ DO I FEEL RESPECTED BY MY PARTNER(S)?

T RUST

+ DO I TRUST MY PARTNER(S) BOTH PHYSICALLY AND EMOTIONALLY?

+ IS IT SAFE TO BE VULNERABLE WITH MY PARTNER(S)?

S AFETY

+ AM I COMFORTABLE COMMUNICATING MY NEEDS?

+ ARE WE IN AGREEMENT REGARDING PROTECTED SEX?

BODY LANGUAGE

There are many ways of communicating. Information can be conveyed through body language, although *this is not a reliable indicator of consent in sexual interactions.*

IT IS ALWAYS A GOOD IDEA TO HAVE A VERBAL CONVERSATION ABOUT CONSENT.

Signs that your partner is not comfortable with what is happening:

- ⇒ They're not pulling you closer, touching you or reciprocating
 - ⇒ Pushing you away
- ⇒ Holding their arms tightly around their bodies
 - ⇒ Turning away from you or hiding their face
 - ⇒ Stiffening muscles
 - ⇒ Tears, shaking
- ⇒ Lack of any sort of verbal feedback

If you get a negative or non-committal answer to any of these questions, or if your partner's body language is like any of the above examples, then you should **STOP what you are doing and **TALK** to them about it.**

CONSENT PHRASES

“Do you like it when I touch you there?”

*“I like it when you do that,
do you like that, too?”*

“Does it feel good when I...?”

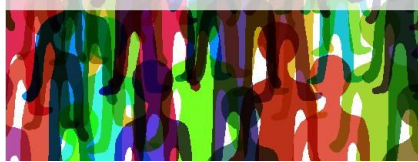
“Keep going. Don’t stop.”

“What would you like?”

WE SPEAK WE STAND



WE SPEAK WE STAND
WESLEYAN'S COMMUNITY OF CARE



WE Speak, WE Stand is Wesleyan's Bystander Intervention program designed to create a community that is actively engaged in the prevention of sexual assault and intimate partner violence and advocates for the responsible use of alcohol. Empowered bystanders make the campus community safer by standing up and speaking out when they witness situations that could potentially harm the health and safety of others. We Speak We Stand training provides students with the skills to move from inaction to action and to intervene safely and effectively.

Contact Seirra Fowler, MPH, CHES (sfowler01@wesleyan.edu) to learn more about attending bystander intervention training. Information can also be found at <http://www.wesleyan.edu/weswell/services/BystanderIntervention.html>.

HOW CAN I INTERVENE?

There are many strategies for intervening in any situation.

The most important thing to remember is to intervene in the way that you feel most comfortable.

DIRECT: directly interacting with the other person.

"Hey, what are you doing?"

"Are you ok?"

DISTRACT: a strategy that focuses on diversion by diverting the attention of the people in the situation.

DELEGATE: the best approach if you are uncomfortable intervening directly and if someone else is better suited to handle the situation (friend, Resident Assistant, Area Coordinator, Public Safety, etc)

INTERVENTION STRATEGIES

"I" Statements

- Focus on your feelings
- Name the behavior
- State how you want the other person to respond

Silent Stare

Sometimes, a disapproving look can be more powerful than words.

"Bring It Home"

This strategy prevents someone from distancing themselves from their behavior.

"What if someone said your best friend deserved to be assaulted?"

"We're Friends, Right?"

Reframes the intervention as caring and non-critical.

"As a friend, I gotta tell you that getting someone drunk to have sex with them isn't cool. Don't do it."

SEXUAL VIOLENCE PREVENTION IS A COMMUNITY ISSUE.

Student Advisory Title IX Committee: Kate Macken and Nila Ravi coordinate this group. It connects students and groups interested in working on sexual violence issues by providing training, collaborative programming and works in partnership with the Director, Office of Survivor Advocacy and Community Education and Title IX Coordinator to develop campus wide programming. *If you are interested in joining the committee, contact Kate Macken (kmacken@wes) or Nila Ravi (nravi@wes).*

We Speak, We Stand, Wesleyan's bystander intervention program, works to create a community that is actively engaged in the prevention of sexual violence and advocates for the responsible use of alcohol. The training provides students with tools and skills to intervene in different situations. *To become an empowered bystander, contact Seirra Fowler, MPH, MCHES at 860.685.2466.*

Students for Consent and Communication (SFCC) is a student group that develops assault resources and programming. They present workshops about consent, supporting survivors and coordinate Take Back the Night in the spring. *Contact Quinn Gromm (qgrom@wes) to get connected.*

Peer Health Advocates (PHAs) create and implement peer-led health education outreach efforts on a variety of health issues including stress management, drugs, sexual health, sexual violence, etc. *Contact Seirra Fowler, MPH, CHES, Director, WesWell, Office of Health Education (sfowler01@wesleyan.edu) or 860.685.2466 for more information.*

"LIKE" the WEconSent Facebook Page to learn more about campus and community events that focus on sexual violence prevention.

HEALING AND SUPPORT AT COUNSELING AND PSYCHOLOGICAL SERVICES

Counseling and Psychological Services (CAPS) provides a range of therapeutic services for students including experiences with gender and power based violence (sexual assault, intimate partner violence and stalking). These experiences can significantly impact your life and how you may begin to think about yourself and respond to different relationships and situations. Seeking counseling can help you to sort out your feelings about the event(s), assist you in making decisions about what you would like to do next and help you begin the healing process.

Individual Support: Making the decision to come to counseling is the first step in healing for many students. In collaboration with a therapist, a survivor can explore their feelings about their experience and move forward in a safe and supportive environment.

Group Support: Joining a group can be an empowering and transformative experience for survivors of sexual assault. It provides an opportunity to connect with other survivors who have had a similar experience, helps survivors learn new ways to cope with the aftermath of a sexual assault and enables survivors to see people in various stages of the healing process. CAPS offers a variety of groups each year.

Sexual Assault Survivors Support Group: This group is a space where female identified survivors can reconnect with their power in community with other survivors. The group follows an open support group format and participants determine group topics each week. The group meets for 1.25 hours each week. The group is offered in the fall semester.

*Contact Counseling and Psychological Services at 860.685.2910
to schedule an appointment and for group information.*

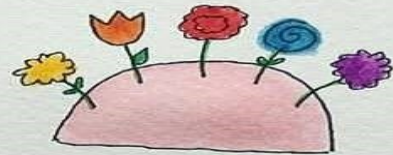
SYNONYMS FOR HEALING



FEELING AT
HOME IN YOUR
BODY



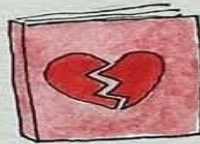
HOLDING
(NOT FEARING)
MEMORIES



BECOMING
FRIENDS WITH
YOUR MIND



TRUSTING
THE WORLD
AS A SAFE &
SOFT PLACE TO BELONG



TRANSFORMING
TRAUMA INTO
STORY



FEELING POSSIBLE
AGAIN

Source: @mariandrews via Instagram

FREQUENTLY ASKED QUESTIONS

How long will it take to get over this?

Healing from the trauma of a sexual assault is not a linear process. Many survivors of sexual assault enter therapy with the expectation that a therapist will tell them exactly what they need to do to move forward. Unfortunately, this is not a realistic expectation. Given the uniqueness of each situation, there is not a one-size-fits-all solution. Making the decision to come to therapy is a first step for some people in healing. In collaboration with a therapist, a survivor can explore their feelings about the experience and move forward in a safe and supportive environment.

I was not sexually assaulted, abused or stalked; my friend/partner was—how can counseling help me?

Talking with a therapist can help you sort out your feelings and help you develop a plan for taking care of yourself as you support your friend. Seeking therapy can help ensure that you do not lose sight of your needs. Talking with someone may be especially helpful if you have a history of sexual violence, because sometimes hearing about someone else's experience can bring forth feelings and memories.

I was sexually abused a long time ago. How will it help to talk about it now?

Whether the abuse happened when you were 2 months old or 18 years old, or somewhere in-between, a history of sexual abuse can significantly affect the way that you see yourself, how you view relationships, your trust in yourself and others and how you feel about your body among other things. Many survivors report feeling "different" and often mistakenly believe that they are bad, damaged or unworthy. These beliefs are untrue and were often planted by the perpetrator(s) to blame the survivor for their behavior and prevent them from telling others about the abuse. Breaking the silence is the first step in the healing process. Counseling can help.

Do I have to talk about my experience every session? There are other things going on in my life.

No. Sessions will move at your pace. You will not be forced to talk about things that you do not feel comfortable discussing.

FREQUENTLY ASKED QUESTIONS

My friend was sexually assaulted. They need to go to therapy. How can I make them go?

Your friend is fortunate to have someone who is concerned about their emotional well-being. **It is important that your friend is in charge of whether or not they decide to seek therapy.** When someone is sexually assaulted, they lose their sense of power and control to make decisions. One of the most important and supportive things a friend can do is to provide the survivor with opportunities to make choices. This means letting them decide when/if they choose to come to therapy. Provide your friend with information about all of their options and available resources and allow them to make the final decisions. For example, you can direct them to the sexual violence website, (www.wesleyan.edu/sexualassault), provide a non-judgmental listening ear and consider scheduling a consultation appointment with CAPS as you support your friend.

My friends have pointed out that my partner doesn't treat me very well and I'm starting to see it, but I do not want to break up. If I go to therapy, will the therapist pressure me into leaving the relationship?

Our goal is to help students build healthy relationships that are free of violence, emotional abuse and intimidation. While therapists are concerned about your emotional and physical well-being, they cannot make you leave a relationship. Therapists are also sensitive to the conflicting emotions that students may experience as they contemplate ending a relationship. The therapist will help you explore all of your options and provide a non-judgmental space for you to make a decision. In instances where you are not ready to leave a relationship, the therapist will help you identify ways that you can keep yourself safe.

Sexual violence, whether it's relationship violence, stalking or sexual assault, can be challenging to deal with alone. Support is available. Contact Counseling and Psychological Services to schedule an appointment, if you have been affected by issues of relationship violence, stalking or sexual assault at 860.685.2910.

SEXUAL ASSAULT REPORTING OPTIONS: THE FIRST 96 HOURS

Sexual assault is never the survivor's fault.

Evidence Collection Kit at Middlesex Hospital: An evidence collection kit is administered by trained nurses at the hospital in order to collect physical evidence that can be used at a later time in a criminal case. **An evidence collection kit can still be done even if a person has showered or changed as long as it is within the 96 hour window.** If possible, do not shower or change before the exam.

- **A counselor at the Women and Families Center on Main Street in Middletown (888-999-5545) can accompany students to the hospital emergency room for a rape kit and also to the police station if they wish to file a report immediately.** The evidence from a rape kit is given a case number and sent anonymously to the police, if the student decides to file a report in the future.
- Public Safety can provide rides to the hospital and the police station (860-685-3333).
- You can contact a Davison Health Center provider prior to visiting the ER; the provider will then alert the ER so that appropriate support staff is available (860-685-2470).
- Counseling and Psychological Services (CAPS) at the Davison Health Center (860-685-2910), and the counselors at the Women and Family Center (888-999-5545) are on call 24/7.

SEXUAL ASSAULT REPORTING OPTIONS: CONFIDENTIAL RESOURCES

Sexual assault is never the survivor's fault. If you or someone you know has been sexually assaulted, or even if you are not sure whether you are dealing with a case of sexual assault, a variety of resources are available to you, many of which are confidential.

NEED SOMEONE TO CONFIDE IN? Confidential help and support are available for students who are not sure if they are ready to report to the University.

Confidential campus support resources include:

Clinicians and Nurses/Davison Health Center (on call 24/7)

Therapists/Counseling and Psychological Services (on call 24/7)

Chaplains/Office of Religious and Spiritual Life

They provide a confidential space for students to discuss their options and information about campus and community resources. These members of the community are legally protected because of their professions. The only report they are compelled to submit is a record that a student (whose name they do not have to disclose) has reported sexual misconduct to them.

SEXUAL ASSAULT REPORTING OPTIONS: WESLEYAN SEXUAL ASSAULT RESPONSE TEAM (SART)

Sexual assault is never the survivor's fault.

SART members are Wesleyan faculty and staff who are trained to provide support and assistance to any student who is a survivor of sexual assault or other form of sexual violence. SART members strive to ensure that a survivor has the resources they need, while ensuring their privacy. The supportive function of a SART member includes helping survivors by explaining options for medical care, mental health care, housing, academic concerns, and how to file a report with the University and/or police.

SART Members – Confidential Resources*

Jennifer D'Andrea, Counseling and Psychological Services, 860-685-2910

Sandy Frimel, Health Services, 860-685-2470

David Leipziger Teva, Chaplain, 860-685-2278

Tracy Mehr-Muska, Chaplain, 860-685-2277

**Other confidential resources who are not specifically trained as SART members also include all clinicians in the Davison Health Center, all therapists at the Counseling and Psychological Services Office, and all clergy members.*

SEXUAL ASSAULT REPORTING OPTIONS: WESLEYAN SEXUAL ASSAULT RESPONSE TEAM (SART)

Sexual assault is never the survivor's fault.

SART Members – Responsible Reporters

All Class Deans:

- Renee Johnson-Thornton – 860-685-2764
- Louise Brown – 860-685-2758
- David Phillips – 860-685-2765
- Jennifer Wood - 860-685-2774

Maureen Isleib, Residential Life, 860-685-3166
Joyce Walter, Davison Health Center, 860-685-2656
Seirra Fowler, WesWell, 860-685-2466
Rachele Merliss, SART Intern 860-685-4673 (HOPE)

SART members will respect the privacy and confidentiality of the students with whom they work. It is in the best interest of the student to keep the number of people involved to a minimum. In instances where it is necessary to discuss the survivor's situation with other members of the University community, the SART member will seek the student's consent. The student's name is not to be shared unless deemed necessary.

The SART Intern, Rachele Merliss '17, acts as a liaison between students and on- and off-campus resources for sexual violence and creates space for campus dialogue, education, and awareness around issues of sexual violence. The SART intern can help you or a friend navigate a room change, connect with campus and community resources and explore reporting options. The SART intern is also a member of the Title IX Education Committee, which works to develop sexual prevention and response training.

SEXUAL ASSAULT REPORTING OPTIONS: OTHER SOURCES OF SUPPORT

*Guidance and advice for students who are not entirely sure if they are ready to file a formal report
(with either the University or the Police)*

Davison Health Center is available for sexual assault follow-up including STI treatment/prevention, and pregnancy prevention. The Health Center is open six days a week, and a physician is on call 24/7 while classes are in session. **All fees for services, testing and treatment are waived in the event of a sexual assault.** The Health Center does not administer an evidence collection kit. A student who may be interested in pursuing legal prosecution is encouraged to seek care at Middlesex Hospital Emergency Department to complete an evidence collection kit.

A student may choose to talk to other members of the community like an area coordinator, a resident assistant, a student affairs staff member, a faculty member, or a class dean who cannot have a legally privileged conversation without reporting the assault to the University. **Students are encouraged to report assaults to the University and regardless of who receives the report, the survivor's privacy will be respected during any investigation. To the extent possible, a survivor's wishes will be followed in determining whether to move forward with a hearing.**

A student who is seeking more information about reporting to the University should talk to Debbie Colucci, Deputy Title IX Coordinator, Lt. Paul Verrillo, Public Safety or a confidential resource in Counseling and Psychological Services or the Office of Religious and Spiritual Life.

You may also file a confidential crime report online at <http://www.wesleyan.edu/sexualassault/reporting/anonymous.html> Because identifying information is not included in this type of report, Public Safety cannot investigate the incident and there cannot be formal judicial follow-up by the University.

SEXUAL ASSAULT REPORTING OPTIONS: CONSIDER MAKING A FORMAL REPORT

Public Safety and counselors from the Women and Family Center can assist students with filing a report to the police. In cases where the incident is reported to both the police and the University, the police investigation is normally done first with the assistance of university resources.

**If you would like to file a report with the police,
you can pursue any of these options:**

Call Public Safety to assist with the report (860-685-3333).

Call the Women and Family Center in Middletown to assist with reporting (888-999-5545).

Call the Middletown Police Department (MPD) at (860-344-3200) and ask them to send a specially-trained officer to take the report from the student's room or another safe space on campus.

Walk into the MPD on Main Street between Court and College Streets.

**If you would like to report to the
the university:**

Report directly to a Title IX Investigator. (See next page for names of investigators).

Sexual Misconduct cases are reviewed by a trained administrative panel. The panel is composed of two male and two female administrators, one of whom is always a representative of the Office of the Dean of Students to ensure that protocol and procedure are followed.

Antonio Farias, Title IX Officer, monitors incidents and ensures an effective university response to each complaint. At any point in the process, you may contact him by phone at 860.685.3927 or by email at afarias@wesleyan.edu.

Women and Families Center – Sexual Assault Crisis Services

The Women and Families Center offers support services and support groups for survivors of sexual violence and their loved ones. They also provide accompaniment and advocacy through medical, police and legal systems.
www.womenfamilies.org

24 Hour Crisis Hotline: 888.999.5545 (English)/1.888.568.8332
(Spanish)

Sign language interpreters are available
All services are free and confidential.

it's okay to ask for help

TITLE IX INVESTIGATORS

Debbie Colucci,
Deputy Title IX Coordinator
860.685.2456

Lt. Paul Verrillo
Public Safety, 860.685.2818

Valerie Walker, Public Safety
860.685.2345

Melissa Widlak, Public Safety
860.685.2345

Online Resources

*Rape, Abuse and Incest
National Network*
(www.rainn.org)

Male Survivor
(www.malesurvivor.org)

Public Safety 860.685.2345
(non-emergencies)
860.685.3333 (emergencies)

Middletown Police Department
860.685.3200

Counseling and Psychological Services (CAPS)
327 High Street—Davison Health Center,
2nd Floor

Hours: 8:30am-4:30pm

Phone: 860.685.2910

After-hours on-call therapist: 860.685.2910

Health Services

327 High Street—Davison Health Center,
1st Floor

Hours: Mon-Thurs, 9am-6pm, Fridays, 9am-5pm,
Saturdays, 10am-2pm

Phone: 860.685.2740

WesWell, Office of Health Education

327 High Street—Davison Health Center,
1st Floor

Contact: Seirra Fowler, MPH, CHES, 860.685.2466

Office of Spiritual and Religious Life

<http://www.wesleyan.edu/orssl/>

Phone: 860.685.2278

Sexual Assault Resource Team (SART) Intern

Rachele Merliss '19, 860.685.HOPE

Visit www.wesleyan.edu/sexualassault
for more information.



Bystander Intervention Reminders

Investigate an ambiguous event. It's not easy to tell if something will lead to sexual violence. It's always best to check it out using one of the intervention strategies. Consider how you would want someone to respond if you or a loved one were in a similar situation. If you think something is "off," you're probably right and not the only person noticing.

Be mindful of pressure to conform and be prepared to react to it. If we're not sure if a situation is an emergency, we tend to look to others to see how they are responding. If they aren't responding, we tend not to respond either. Everyone waits for someone else to intervene. **You can be the person who intervenes and changes the outcome of a situation.**

Trust your gut. If you think something isn't right in a situation, you're probably right. Trust yourself.

Respond with respect so that situations aren't escalated unnecessarily.

ASK FOR HELP

By asking someone to help you, you gain support and spread awareness.

Can you **come with me** to help that person over there?

I don't feel comfortable going alone.



WE SPEAK WE STAND
WESLEYAN'S COMMUNITY OF CARE

<http://www.wesleyan.edu/weswell/services/BystanderIntervention.html>



WE SPEAK WE STAND
WESLEYAN'S COMMUNITY OF CARE



FOR MORE INFORMATION:

www.wesleyan.edu/sexualassault

www.wesleyan.edu/weswell/services/BystanderIntervention.html

Updated: August 2017